



*Fourteenth*

A N N U A L  
C H A R I T Y  
G O L F O U T I N G



FRIENDSHIP ASSOCIATION  
EDUCATION ASSISTANCE, INC.

SATURDAY, JUNE 8, 2019

WORTHINGTON MANOR GOLF COURSE

Urbana, Maryland, USA

Jamachi

PLASTIC SURGERY ■ MEDISPA



Look good

Feel good

IMAGINE

ASK ABOUT LUNCHTIME LIPO

Book your appointment today:

Downtown Silver Spring

[www.Jamachi.com](http://www.Jamachi.com)

(301) 589-2015

## A SPECIAL

# *Thank You Note*

---

The Friendship Association Education Assistance, Inc. (FAEA), wishes to express its sincere thanks to all the individuals, companies, and organizations that have supported our efforts over the years and sends a special thank you to everyone participating in today's outing. Your continued commitment to the work that we do is truly appreciated.

Please take the time this afternoon to talk with the Committee members who will be joining you on the course and during the reception. These dedicated individuals have many stories of their experiences and the good work that FAEA is dedicated to continuing to share.

Thank you again for your participation today. Our success as an organization would not be possible without your support.

---

### **The Friendship Association Education Assistance 2019 Golf Committee**

ALEX AGWUNA • DR. ALEX NNABUE • BOB UMEOZULU

DR. EMEKA ONYEWU • MAX JAMES • DR. OBI MADUKA

VINCE ONUIGBO - *Chairman*

**Friendship Association Education Assistance, Inc.**

8780 Georgia Avenue • Silver Spring, MD 20910 • Phone: 888-441-0494

**[www.faeagolf.com](http://www.faeagolf.com) • [www.friendshipeducation.org](http://www.friendshipeducation.org)**

## Friendship Association Education Assistance, Inc.

Friendship Association Education Assistance, Inc. (FAEA), a non-profit 501(c)(3) organization with the goal of operating exclusively for charitable and educational purposes, was established in 1996 by Nigerian Friendship Association (NigFA), a non-profit organization formed in 1986 by Nigerian students and professionals in the greater Washington DC area.

FAEA has created a compelling legacy of success addressing the educational needs of underprivileged children in North America and in Africa for 21 years by providing children with school supplies, mentorships, and scholarships, as well as funding of materials for schools' renovations, furniture and equipment, and science laboratories. We are able to fund these projects in part through our annual events and financial contributions from NigFA members and FAEA supporters.

### **CURRENT PROJECTS:**

Granting supply wishes to teachers and principals at adopted schools in the United States:

- Cleveland Elementary School, Washington, D.C.
- Shaw Community Center, Washington, D.C.
- Luke C. Moore Alternative High School, Washington, D.C.

### **PAST ACCOMPLISHMENTS:**

FAEA volunteers have adopted over 42 schools by funding renovation projects in Nigeria and purchased much-needed educational tools and granted four-year college scholarships to students in the United States and Nigeria. We estimate our investment has positively impacted over 27,500 children.



THE BOARD AND ENTIRE MEMBERS OF FAEA

## *Wishes to Thank*

all of our sponsors and donors for their investments and continued support of underprivileged children's education in the United States and Nigeria.

We also wish to thank the 2019 Golf Committee for donating their time and talent to the 14th Annual FAEA Golf Outing.

### **RECEPTION SPONSOR**

Hughes Network Systems

### **SILVER**

Jamachi Plastic Surgery & Medi-Spa

Vince and Josephine Onuigbo

### **BEVERAGE CART SPONSOR**

Capital Primary Care, Inc.

### **LONGEST DRIVE**

Dr. & Dr. Dean & Ngozi Duru

Okey Ilonzo

Dr. & Mrs. Dave Chiedu Mbonu

### **CLOSEST TO THE PIN**

World Class Logistics Inc.

### **HOLE-IN-ONE**

Dapo Ojeyemi

## **CHAMPION FOR EDUCATION**

State Farm, Max James  
Arinze and Dr. (Mrs.) Ngozi Agwuna  
City Place Dental  
Dr. Obi and Ijeoma Maduka  
Mekus Inc.  
Rumez International  
Visual Eyes

## **TEE SPONSORS**

Cabinet Concepts & Design  
DivaSkin Medical Aesthetic Clinic  
George Nwabukwu, CPA and Associates  
Keary Cannon  
Meridian Management Group  
Natalie Tusing, State Farm  
Odis and RuthAnn Rich  
Scarlet Oak Acupuncture  
Steve Pflasterer

## **PARTNERS**

Africa Welfare Association  
Association of Nigerian Physicians in the Americas  
Chris Miller  
David Gonzalez  
Jay Frye  
Jon Laskin  
Aham Maduchukwu  
Renee Kearney  
State Farm Insurance Ty Nguyen  
Stephon Scriber  
LaCasse Insurance & Financial Services, Inc.  
The O Network

## RAFFLE ITEMS

Friendship Association Education Assistance gratefully thanks our generous contributors for providing items.

Foursome - Bretton Woods Country Club

Foursome - Worthington Manor Golf Club

50-minute sport massages - Georgetown Sports Massage

Go-Kart Raffle - Crofton Go-Kart Raceway

Richard Bleier Autographed Photo - Baltimore Orioles

Golf Lesson: Swing Evaluation GOLFTEC Gaithersburg

Golf Lesson: Swing Evaluation GOLFTEC North Bethesda

Optical Scanner

Grand Prize - Large Screen Smart TV





# CAPITAL PRIMARY CARE AND CAPITAL PEDIATRICS

"Excellent Care Delivered with Utmost Compassion"

## *Congratulate*

### THE FRIENDSHIP ASSOCIATION EDUCATION ASSISTANCE (FAEA)

On the Celebration of its 14th Annual Charity Golf Outing

In an effort to serve you better Capital Primary Care & Capital Pediatrics have added new providers to their practice.

**(1) Dr. Crystal McGinty Mebane**

Dr. McGinty has special interest in Cardiovascular diseases and weight loss management.

**(2) Ifeoma Ifechukwu PA-C**

Ifeoma was our patient advocate manager and is now a Certified Physician Assistant.

Both providers consult in Gaithersburg and Hyattsville offices

**Call 301-977-9077 and 301-445-0600 to make an appointment**

17 FIRSTFIELD ROAD #200  
GAIHERSBURG MD 20878  
TEL: (301)977-9077  
Fax: (301)977-0402

7411 RIGGS ROAD # 4041  
HYATTSVILLE MD 20783  
TEL: (301)445-0600  
Fax: (301)445-1516

2150 ANNAPOLIS ROAD #212  
GLENDALE MD 20769  
TEL: (301)860-0002  
Fax: (301)445-1516



**AT CAPITAL PRIMARY CARE AND CAPITAL PEDIATRICS,  
WE DELIVER EXCELLENT CARE WITH  
UTMOST COMPASSION.**

**CECILIA A. NWANKWO MD, FAAP**  
*President & Chairman Of The Board*

**CHRISTIAN N. NWANKWO JR. MD, MPH, FAFP**  
*Asst. Professor—family Practice Howard Univ.  
Medical Director & Ceo*





---

## OUTING SCHEDULE

---

Registration Opens.....	11:00 A.M.
Lunch.....	11:30 A.M.
Pre-Game Massage .....	11:30 A.M.
• <i>Sponsored by Jamachi Plastic Surgery &amp; Medi-Spa</i>	
Driving Range Opens .....	12:00 P.M.
Swing Clinic.....	12:00 P.M.
Qualify for the Putting Contest.....	12:00 P.M.
Announcements.....	1:00 P.M.
Putting Contest.....	1:10 P.M.
Shotgun Start.....	1:30 P.M.
Golf Clinic .....	5:30 P.M.
Reception .....	6:30 P.M.
• Award Presentation	
• Raffle Winners Announced	



---

## CONTESTS

---

### Hole 6

- Women's Closest to the Pin
- Zero Restriction:**
- Men 145 yds
  - Ladies no less than 135 yds.

### Hole 8

- Men's Closest to the Pin
- HP Laptop or Tablet**
- Men 155 yds
  - Ladies no less than 135 yds.

### Hole 9

- Men's Longest Drive

### Hole 13

- Women's Longest Drive

### Hole 15

**Callaway Gift Card:**

- Men 136 yds
- Ladies no less than 135 yds

### Hole 17

**Vehicle hole in one:**

- Men 161 yds
- Ladies no less than 146 yds.



# **GALA AND DANCE**

**You are cordially invited to our  
Gala and Dance Celebrating Nigeria's  
59th Year of Independence**

**Saturday, September 28, 2019  
8:30 p.m. to 2:00 a.m.**

**Martin's Crosswinds  
7400 Greenway Center Drive  
Greenbelt, Maryland 20770**

**Donations \$75.00 per person**

**[nigerianfriendship.org](http://nigerianfriendship.org)**

# FAMILY DAY PICNIC

SPONSORED BY:

**THE NIGERIAN FRIENDSHIP ASSOCIATION, INC**



**PLACE: CENTENNIAL PARK -EAST, PAV "H"  
COLUMBIA (off Route 108, West Clarksville)**

**DATE: SATURDAY, JULY 13, 2019**

**TIME: 01:30 P.M. - 7:00 P.M.**



**BRING YOUR FAVORITE GAMES AND SOCCER BOOTS,  
AND LET'S HAVE SOME FUN!!!**

**DIRECTIONS:**

***From Washington D.C***

***Take I-95 North and exit onto Route 32 West. From Rte 32 West, take Rte 29 North towards Columbia and follow the directions below. OR***

***Follow 495 to Route 29 North toward Columbia and exit on Route 108 West towards Clarksville. Go pass the first light-Columbia Rd and make the next right on Woodland Rd and immediate left to park entrance "Centennial Park – East PAV H". (If you get to Centennial Park main entrance, you have passed it).***

***From Baltimore***

***Follow I-95 South to Route 100 West going towards Columbia and follow the directions from above. OR Follow 695 to I-70 West and exit on Route 29 South Columbia. Take the fourth exit off Rte 29 South, Rte 108 West Clarksville. Pass the first light-Columbia Rd and make the next right on Woodland Rd, then immediate left to Park entrance "Centennial Park – East PAV H".***

**WARNING: FROM RTE 29, IF YOU GET TO CENTENNIAL PARK MAIN ENTRANCE ON RTE 108, YOU HAVE PASSED THE ENTRANCE TO THE PARK "PAV H"...CAUTION, PARKING IS LIMITED AT "PAV H", PEASE IF POSSIBLT PARK ON THE STREET AND WALK IN. THANKS.**

# MMG

MERIDIAN MANAGEMENT GROUP

“EFFICIENTLY DEPLOYING CAPITAL TO UNDERSERVED MARKETS THROUGHOUT MARYLAND”

Financing for small, minority, women,  
and veteran owned businesses.

Fueling Dreams

Creating New Realities



## PRODUCTS

Term Loans  
Lines of Credit  
Demand Loans  
Letters of Credit  
Subordinated Debt  
Equity Investments  
Surety Bonding

For More Information, Contact The Fund Manager  
Meridian Management Group, Inc.  
826 E. Baltimore Street  
Baltimore, MD 21202  
Phone: (410) 333-2548 | Fax: (410) 333-2552  
Website: [www.mmgcapitalgroup.com](http://www.mmgcapitalgroup.com)  
Email: [mmgdeal@mmggroup.com](mailto:mmgdeal@mmggroup.com)

funds managed by Meridian Management Group, Inc.



Maryland Small Business  
Development Financing Authority



Maryland Casino  
Business Investment Fund

**Dr. & Mrs.  
Dave Chiedu Mbonu**

*supports the*

Friendship Association Education Assistance, Inc.



*Fourteenth*  
A N N U A L  
C H A R I T Y  
GOLF OUTING

**OKEY ILONZO**

*supports the*

Friendship Association Education Assistance, Inc.



*Fourteenth*  
A N N U A L  
C H A R I T Y  
GOLF OUTING

*There's No Place Like Home!*

Trust an experienced real estate professional with  
the most important financial investment of your life!



[www.StevePflasterer.com](http://www.StevePflasterer.com)  
email: [steve@stevepflasterer.com](mailto:steve@stevepflasterer.com)  
Office: 202-338-8900  
Mobile: 202-669-0714



**RE/MAX**  
ALLEGIANCE



**Arinze and Dr. (Mrs.)  
Ngozi Agwuna**

*supports the*

Friendship Association Education Assistance, Inc.



*Fourteenth*  
A N N U A L  
C H A R I T Y  
GOLF OUTING

**Mekus Inc.**

*supports the*

Friendship Association Education Assistance, Inc.



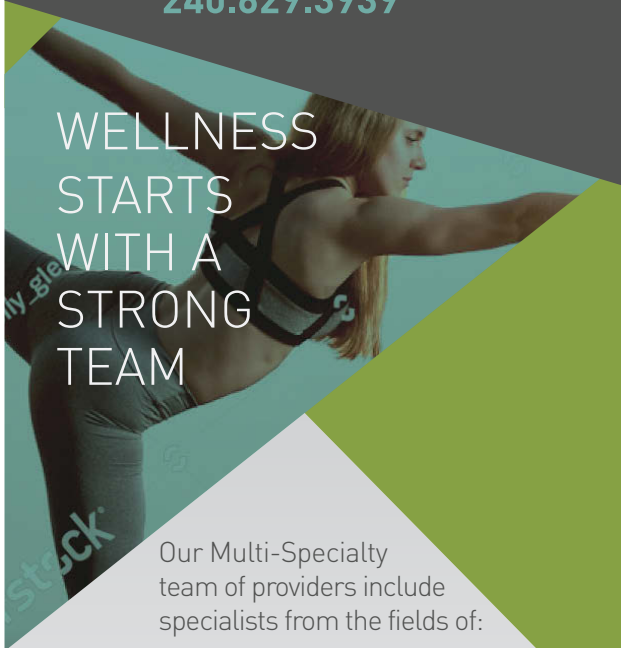
*Fourteenth*  
A N N U A L  
C H A R I T Y  
GOLF OUTING



# ORTHOPEDIC & WELLNESS

PAIN & SPINE SPECIALISTS

[www.orthopedicwellness.com](http://www.orthopedicwellness.com)  
240.629.3939



WELLNESS  
STARTS  
WITH A  
STRONG  
TEAM

Our Multi-Specialty team of providers include specialists from the fields of:

- PAIN MANAGEMENT
- ORTHOPEDICS
- PHYSICAL MEDICINE & REHABILITATION
- HORMONE THERAPY

Two locations conveniently located near **Washington DC.**

**FREDERICK • WALDORF**  
MARYLAND



# **Dr. Obi and Ijeoma Maduka**

*supports the*

Friendship Association Education Assistance, Inc.



*Fourteenth*  
A N N U A L  
C H A R I T Y  
GOLF OUTING

# **Natalie Tusing**

**STATE FARM**

*supports the*

Friendship Association Education Assistance, Inc.



*Fourteenth*  
A N N U A L  
C H A R I T Y  
GOLF OUTING



Africa Welfare Association (AWA) is a pioneer provider of services to its Diaspora members in the event of loss of life. We are entrusted with the welfare of the African Diaspora globally. AWA was set up in response to the ever growing demand for services at a critical time. With trusted partners, AWA will offer you benefits wherever you are in the world.

To cater for different tiers we provide affordable family and/or individual membership rates as shown below. Group membership is also available. Please contact us for group quotes.

### AWA Membership Benefits and Rates

Benefits	Membership Type	Monthly	Yearly
✓ 100% Repatriation Expenses covered to home country	Single/Individual (18-70yrs)	\$18	\$192
✓ Return Tickets for spouse & dependent children (if members)	Couple (two adults)	\$30	\$325
✓ Payout Assistance up to \$2,000	Family (couple + two children under 18yrs)	\$40	\$420
✓ Local Burial and Cremation in host country	Single Parent (+ two children under 18yrs)	\$30	\$325
✓ Airline Discounts (10% off on British Airways for select countries, all year round)	Adult Seniors (70-75yrs)	\$28	\$300
	Additional Child (under 18yrs)	\$8	\$70

To enroll for membership the following information is required for every applicant, spouse, child(ren) and next of kin:

- Full Names (as they appear on ID/Travel documents)
- Date of Birth and Gender
- Next of kin plus email and phone number
- Contact Details (Physical Address, Email, Phone Number)
- Payment Information (by Debit/Credit Card only, we do not accept cash)

Contact us for enrollment today via the information provided below:

*Lawrence Muraya*

Email: [Lawrence.muraya@africawelfareassociation.org](mailto:Lawrence.muraya@africawelfareassociation.org)

Phone: 484-678-2455

*Edna M Velle*

Email: [edna.velle@africawelfareassociation.org](mailto:edna.velle@africawelfareassociation.org)

Phone: 215-687-1206

For additional information please visit our Website ([www.africawelfareassociation.org](http://www.africawelfareassociation.org)) and on Facebook ([www.facebook.com/africawelfareassociation](http://www.facebook.com/africawelfareassociation)).

Regards,  
AWA Team

# **ODIS & RUTHANN RICH**

*supports the*

Friendship Association Education Assistance, Inc.



*Fourteenth*  
A N N U A L  
C H A R I T Y  
GOLF OUTING

# **Scarlet Oak Acupuncture**

*supports the*

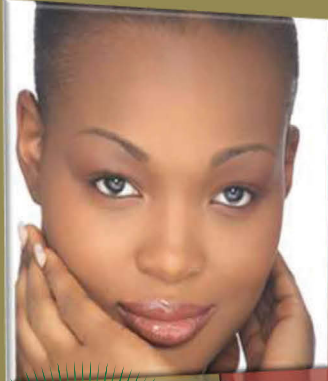
Friendship Association Education Assistance, Inc.



*Fourteenth*  
A N N U A L  
C H A R I T Y  
GOLF OUTING

# DivaSkin Medical

## Aesthetic Clinic



**Theraclear  
for acne now  
available**

*Fall into the season with a new look!*

### Services

Laser Hair Removal  
Acne treatment with Isolaz  
Isolaz Deep Pore Laser Therapy  
Skin rejuvenation with laser  
Medical Grade Chemical Peels  
RF Liposuction  
Botox, Dysport & Fillers (Restalyn, Perlane, Radiesse, Juvederm for wrinkles and filling deep creases)  
Sclerotherapy (vascular therapy)  
Treatment for Bruxism (teeth grinding)  
Hyperhidrosis Treatment using Botox/Dysport (excessive sweating)

### Products

Obagi products  
Other Skincare products

**\$20 off**

Any treatment or service

Coupon not valid with other coupons or specials

**\$50 off**

Any laser treatment

Coupon not valid with other coupons or specials

**\$100 off**

Chemical Peel reg. \$350

Coupon not valid with other coupons or specials

**For more information please contact**

Dr. Ruth Agwuna - 443-956-1239

or

Vida Taj - 410-292-1504

[www.DivaSkinMAC.com](http://www.DivaSkinMAC.com)

5084 Dorsey Hall Dr. Suite 104  
Ellicott City, MD 21042

# **Dr. & Dr. Dean & Ngozi Duru**

*supports the*

Friendship Association Education Assistance, Inc.



*Fourteenth*  
A N N U A L  
C H A R I T Y  
G O L F O U T I N G

# **LaCasse Insurance & Financial Services, Inc.**

*supports the*

Friendship Association Education Assistance, Inc.



*Fourteenth*  
A N N U A L  
C H A R I T Y  
G O L F O U T I N G

# Rumez International

INTERNATIONAL TRADE CONSULTANTS



**Rumez International**

P.O. Box 1832  
Ellicott City, Maryland 21041  
USA

Tel: 443-250-0305  
+234-803-333-7796

Email: [rumezinter@aol.com](mailto:rumezinter@aol.com)



# **George Nwabukwu, CPA and Associates**

*supports the*

Friendship Association Education Assistance, Inc.



*Fourteenth*  
A N N U A L  
C H A R I T Y  
G O L F O U T I N G

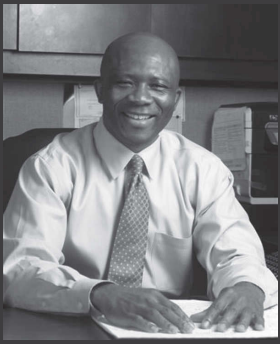
# **City Place Dental**

*supports the*

Friendship Association Education Assistance, Inc.



*Fourteenth*  
A N N U A L  
C H A R I T Y  
G O L F O U T I N G



# Plan for the unexpected when you're healthy.

Max James Ins and Fin Svcs Inc  
Max James, Agent  
1713 7th Street NW  
Washington, DC 20001  
Bus: 202-319-0005 x 9

Ask me how these State Farm® health products can protect you if you become ill, or get injured and are unable to work:

- disability insurance
- hospital income insurance
- supplemental insurance
- long-term care insurance

**Like a good neighbor,  
State Farm is there.®**

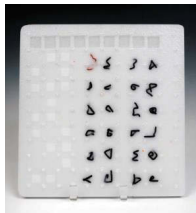
CALL ME TODAY.



1101399.1

State Farm Mutual Automobile Insurance Company  
Bloomington, IL

## Keary Cannon GlassWorks





# Cabinet Concepts & Design

*supports the*

Friendship Association Education Assistance, Inc.



*Fourteenth*  
A N N U A L  
C H A R I T Y  
G O L F O U T I N G

# The O Network

*supports the*

Friendship Association Education Assistance, Inc.



*Fourteenth*  
A N N U A L  
C H A R I T Y  
G O L F O U T I N G



# WORLD CLASS LOGISTICS, INC

## *Africa & Beyond*

YOUR AIR & OCEAN FREIGHT SPECIALISTS FROM ANY POINT IN THE USA  
TOLLFREE (888) 252-3506  
EMAIL: [ADMIN@ADEXCARGO.COM](mailto:ADMIN@ADEXCARGO.COM)  
CONTACT: TOM SALAKO





Visual Eyes is committed to providing Families with the BEST Eyecare in the Washington Metro Area.

YES, We take your insurance!

**Services We Offer:**

- State-of-the-art comprehensive eyecare
- Eye disease treatment and management
- Designer eyewear and sunglasses
- Colored and bifocal contact lenses
- Pediatric eyecare
- Laser vision consultants

**Dr. Alexander C. Nnabue**

Visual  Eyes  
Your Lifetime Eyecare Center

A MEMBER OF *VISION SOURCE™*

[www.visualeyes4u.com](http://www.visualeyes4u.com)

Mitchellville: 10240 Lake Arbor Way, Mitchellville MD 20721  
301-324-9500

Hyattsville: 1835 University Blvd, Ste 228, Hyattsville MD 20783  
301-434-3937

Silver Spring: 10313 Georgia Ave, #109, Silver Spring, MD 20902  
301-681-9797

Frederick: 176 Thomas Johnson Dr. #100, Frederick, MD 21702  
301-694-7557

Greenbelt: 6088 Greenbelt Rd, Unit 44, Greenbelt MD 20770  
301-614-3937

Clinton: 8931 Woodyard Rd, Clinton MD 20735  
301-877-1770



# IT'S ALL ABOUT THE CONNECTED EXPERIENCE.

Learn more at [Hughes.com](https://www.hughes.com)

Powering a Connected Future.

CONSUMER | ENTERPRISE | GOVERNMENT | DEFENSE